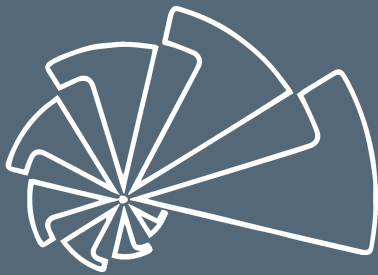




## INFINITY RACK



Power.Beauty.Comfort.

## CANTILEVER CARPORT

### PRODUCT NAME:

Cantilever Carport

### PRODUCT NUMBER:

INFR-CC

### PRODUCT CATEGORY:

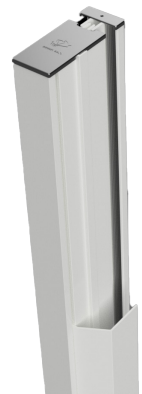
Carports

## PRODUCT OVERVIEW

### Steel Frame Cantilever Carport

Infinity Rack Cantilever Carports are the most advanced solar carports on the market. Infinity Rack Carports are mechanically watertight and have internal wire chaseways to encapsulate and protect all wiring. Our design eliminates potential safety concerns of traditional solar carports where wire ties eventually fail resulting in dangling high voltage wire in public spaces. Additionally, by being mechanically watertight, we eliminate staining of vehicles parked underneath. Damage occurs as a result of dripping water between modules carrying soiling on to the cars as water pours between solar modules on legacy carports.

Our steel is galvanized then powdercoated for a tough long lasting finish. Infinity Rack Cantilever Carports have a clean high-end aesthetic and are built to handle extreme weather.



## PRODUCT FEATURES

### The Infinity Rack Advantage

- 01** Mechanically Watertight - Horizontal support clamps modules together on EPDM gasket
- 02** Fully Encapsulated wiring chaseways
- 03** Access points for pulling wire internally in steel frame
- 04** Designed for extreme weather and snow loads
- 05** By fully supporting the module frame on all four sides large format bifacial solar panels can be used in high wind and snow load regions



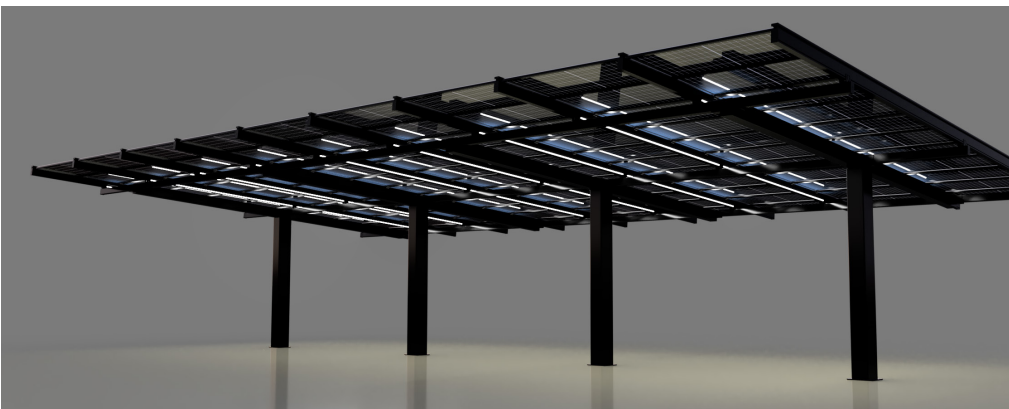


## TECHNICAL DATA SPECIFICATION

Product Details	Specification
Max Span between columns	27ft (custom solutions for longer spacing)
Max Span on Roof Beam	18ft (6ft cantilever past steel framing)
Max Clear Height	16ft
Max Structure Length	300ft
Max Structure Depth	42ft
Powdercoat	2604 (Optional 2605)
Color Options	White, Beige, Black, 2 tone, Custom colors available
Aluminum Alloy & Temper (roof framing)	6005A T6 (Roofbeam) 6063-T6 (All other components)
Max Wind Speed	195MPH
Max Snow Load	100psf

## OPTIONS

- Single and Dual Cantilever
- 3 to 11 modules deep in landscape
- Multiple height options up to 16ft min clearance for RVs, Trucks, & Buses
- Accessory LED lighting kits
- Custom Colors
- Custom Framing Layouts



## PRODUCT CERTIFICATIONS



**UL 2703**

In process

## EASE OF INSTALLATION

Our cantilever carports feature a welded steel tube coming down off of the T top that slides into the column locking it into place before bolting. This makes for a safer installation and allows for slight adjustment to make sure the T's all line up level with each other, this is done by tightening bolts on either side of the column against the tube that comes down off of the T top to slightly adjust the angle.

Additionally, wire can be run through the frame after assembly so that wire does not have to be fished through the structure as each beam is placed.

## WARRANTY

This Limited Warranty of Infinity Rack LLC applies to framing and solar mounting products manufactured or distributed by Infinity Rack LLC (Infinity Rack). Lifetime structural warranty on all Infinity Rack framing and brackets, 10 year warranty on gaskets & paint, 6 month warranty on lighting.



INFINITY RACK

