

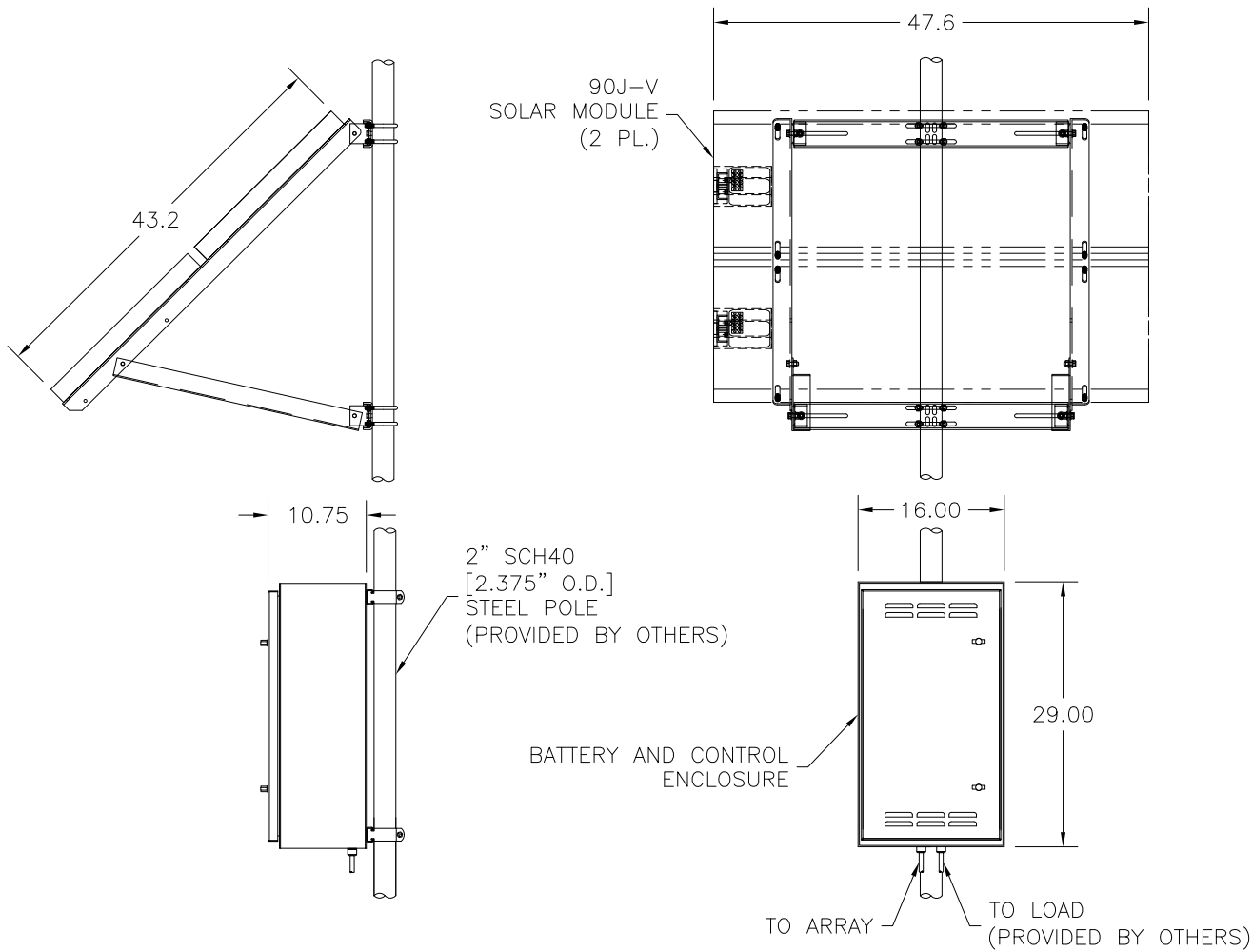
5. GROUND POINT ESTABLISHED BY CUSTOMER.
 4. UNLESS OTHERWISE SPECIFIED, WIRING TO BE #10 RED POSITIVE (+), BLACK NEGATIVE (-), GREEN GROUND (\perp).
 3. BATTERIES TO BE INSTALLED IN THE FIELD.
 2. CONNECTIONS TO BATTERIES TO BE COMPLETED IN THE FIELD.
 1. CONNECTIONS TO ARRAY TO BE COMPLETED IN THE FIELD.
- NOTES:



OWNERSHIP

COPYRIGHT ©2019 THE ABOVE DRAWINGS, SPECIFICATIONS, IDEAS, DESIGNS, AND ARRANGEMENTS ARE AND SHALL REMAIN THE PROPERTY OF SOLAR ELECTRIC SUPPLY AND NO PART THEREOF SHALL BE COPIED, DISCLOSED TO OTHERS, OR USED IN CONNECTION WITH ANY WORK OR PROJECT OTHER THAN THE SPECIFIC PROJECT FOR WHICH THEY HAVE BEEN PREPARED AND DEVELOPED WITHOUT THE WRITTEN CONSENT OF SOLAR ELECTRIC SUPPLY. VISUAL CONTACT WITH THESE PLANS OR SPECIFICATIONS SHALL CONSTITUTE CONCLUSIVE EVIDENCE OF ACCEPTANCE OF THESE RESTRICTIONS.

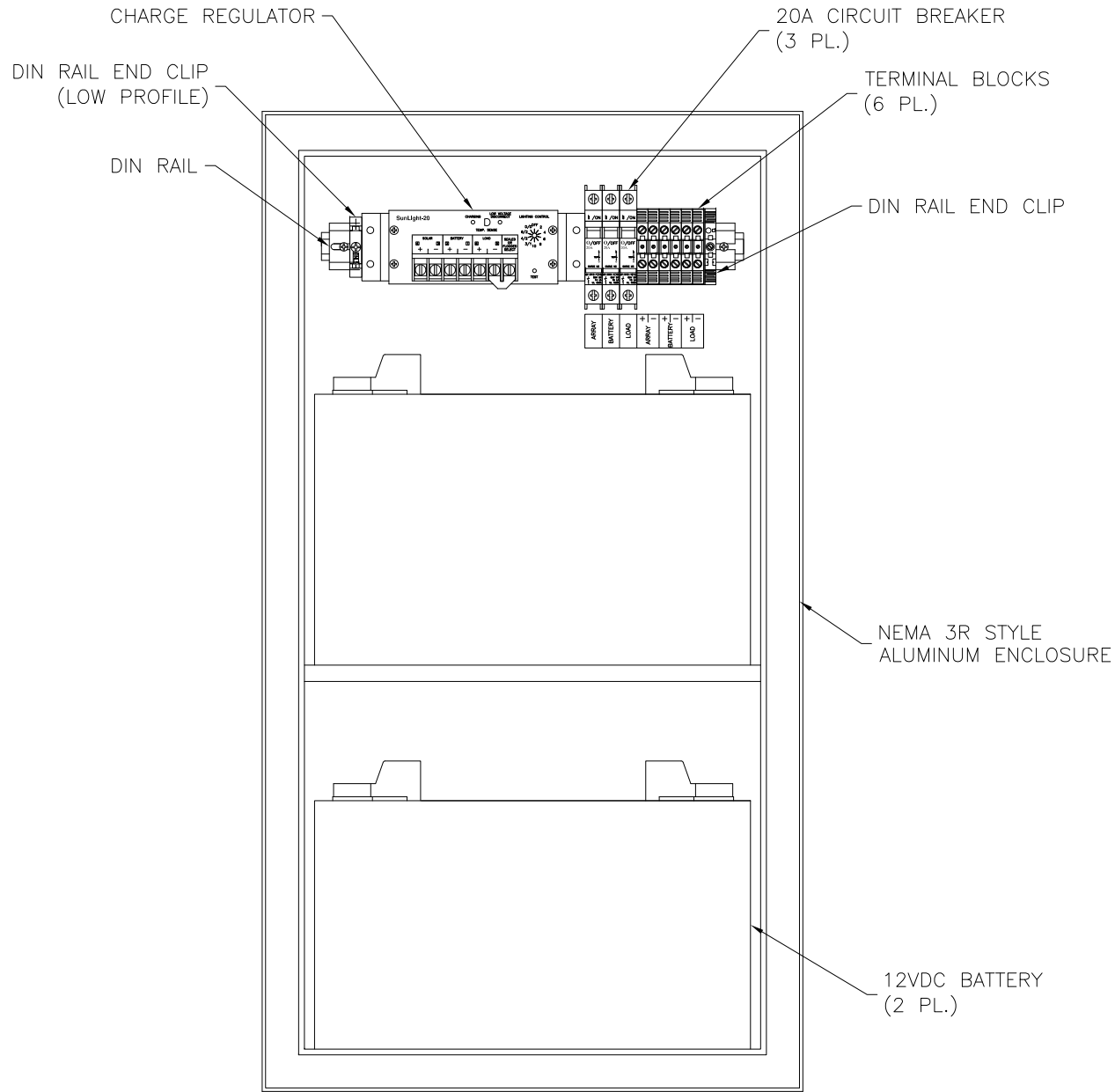
WIRING DIAGRAM		DATE	
MAPPS 180-216-12-SL		14.NOV.19	
UNITS			
UNLESS OTHERWISE SPECIFIED: PRIMARY UNITS ARE: INCHES SECONDARY UNITS ARE: [mm]			
REVISIONS			
REV	REVISED BY	DATE	
APPROVALS			
NAME		DATE	
DRAWN E. RIVAS			
APPROVED			
MISC			
SCALE			
N/A	DRAWING NUMBER	SIZE	
	SD50-0106-3R-SES	A	
	B.O.M. NUMBER		
	SB50-0106-3R-SES		
SHEET 1 OF 3			



OWNERSHIP

COPYRIGHT ©2019 THE ABOVE DRAWINGS, SPECIFICATIONS, IDEAS, DESIGNS, AND ARRANGEMENTS ARE AND SHALL REMAIN THE PROPERTY OF SOLAR ELECTRIC SUPPLY AND NO PART THEREOF SHALL BE COPIED, DISCLOSED TO OTHERS, OR USED IN CONNECTION WITH ANY WORK OR PROJECT OTHER THAN THE SPECIFIED PROJECT FOR WHICH THEY HAVE BEEN PREPARED AND DEVELOPED WITHOUT THE WRITTEN CONSENT OF SOLAR ELECTRIC SUPPLY. VISUAL CONTACT WITH THESE PLANS OR SPECIFICATIONS SHALL CONSTITUTE CONCLUSIVE EVIDENCE OF ACCEPTANCE OF THESE RESTRICTIONS.

SITE LAYOUT		MAPPS 180-216-12-SL	
UNITS		UNLESS OTHERWISE SPECIFIED: PRIMARY UNITS ARE: INCHES SECONDARY UNITS ARE: [mm]	
REVISIONS			
REV	REVISED BY	DATE	
APPROVALS		NAME	DATE
		E. RIVAS	14.NOV.19
		DRAWN	
		APPROVED	
SCALE	DRAWING NUMBER	SIZE	
N/A	SD50-0106-3R-SES		
	B.O.M. NUMBER		
	SB50-0106-3R-SES		
SHEET 2		OF 3	



2. BATTERIES TO HAVE EXPANDED POLYSTYRENE FOAM INSULATION ON ALL SIDES AND DOOR.
 1. ENCLOSURE DOOR NOT SHOWN FOR CLARITY.
- NOTES:



OWNERSHIP

COPYRIGHT ©2019 THE ABOVE DRAWINGS, SPECIFICATIONS, IDEAS, DESIGNS, AND ARRANGEMENTS ARE AND SHALL REMAIN THE PROPERTY OF SOLAR ELECTRIC SUPPLY AND NO PART THEREOF SHALL BE COPIED, DISCLOSED TO OTHERS, OR USED IN CONNECTION WITH ANY WORK OR PROJECT OTHER THAN THE SPECIFIED PROJECT FOR WHICH THEY HAVE BEEN PREPARED AND DEVELOPED WITHOUT THE WRITTEN CONSENT OF SOLAR ELECTRIC SUPPLY. VISUAL CONTACT WITH THESE PLANS OR SPECIFICATIONS SHALL CONSTITUTE CONCLUSIVE EVIDENCE OF ACCEPTANCE OF THESE RESTRICTIONS.

ENCLOSURE LAYOUT

MAPPS 180-216-12-SL

UNITS
UNLESS OTHERWISE SPECIFIED:
PRIMARY UNITS ARE: INCHES
SECONDARY UNITS ARE: [mm]

REVISIONS

REV	REVISED BY	DATE

MISC

SCALE N/A	DRAWING NUMBER	SD50-0106-3R-SES
	B.O.M. NUMBER	SB50-0106-3R-SES
	SHEET	3 OF 3

APPROVALS	NAME	DATE
	DRAWN	14.NOV.19
	APPROVED	—

SIZE	A
------	---